

Details.
Attention to 

A GUIDE

ON HOW TO CREATE

STUNNING DOCUMENTS

WITH CHAMPION

SCRIPT PRO

*I have the simplest
of tastes. I'm always
satisfied with the
Best*

Oscar Wilde 

Thank you for purchasing PF Champion Script Pro.

In the next pages you will find an easy step-by-step guide as well as samples on how to create stunning documents with Champion Script Pro.

Enjoy it!!

Note: For your convenience please download from our website the official pdf specimen file for PF Champion Script Pro.

Program Requirements: Programs which support advanced OpenType features like the Adobe CS series of Illustrator, InDesign, Photoshop as well as QuarkXpress, operating under MacOSX or Windows.
Registered users may consult with our support team on compatibility issues.

HOW TO CREATE STUNNING DOCUMENTS

Champion Script Pro is the most advanced and powerful script ever made. This typeface will amaze you with what it can do to your documents. It makes full use of its opentype features and surprisingly enough is easy to use. In fact you can create stunning documents in minutes and in 2 easy steps. For your convenience it has been pre-programmed, in all languages, to automatically change characters to alternate forms which sit better next to their neighbouring letters. This feature is called 'contextual alternates' and takes into consideration a number of variables like the shape, the type and the frequency of neighbouring letters and **is best to leave 'on' all the time.** The 'contextual alternates' feature (fig. 2) is 'on' by default and of course you can turn it 'off' anytime. Furthermore you can enhance your document manually with alternate character forms by applying the other advanced opentype features (fig. 2) or by choosing characters from the glyphs palette (fig. 1).

First, let's see how Champion Script Pro has been organized. We will concentrate mainly on the alternate characters. These alternate forms have been organized in several groups i.e. standard ligatures, terminal forms, initial forms, stylistic alternates, stylistic sets 1-9, plus small caps (which act as alternates to capitals within a sentence). **You may read an explanation of all the above alternates in the opentype features section of the official Champion Script Pro pdf file, which you may download from our website).** These alternates are either applied automatically when contextual alternates and ligatures is 'on' or they can be applied manually from the glyphs palette (small caps and stylistic sets can also be applied from the opentype dropdown list).

You can create great looking documents in one or two easy steps. Let's find out how.

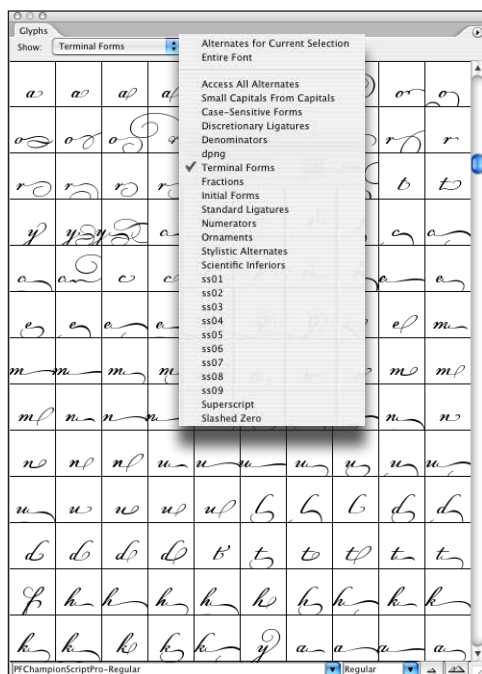


Fig.1

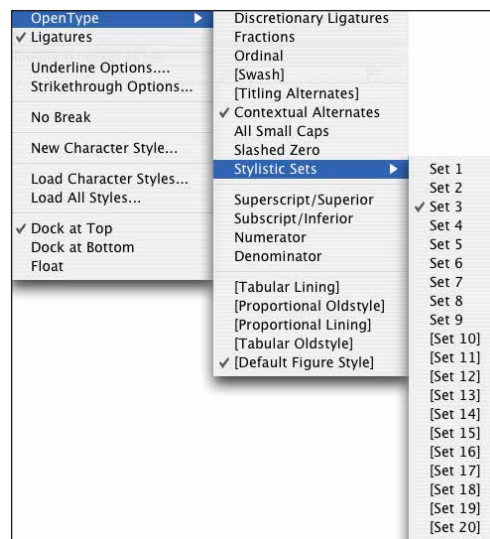


Fig.2

LOOK GREAT - 2 EASY STEPS

Step 1. Turn contextual alternates and ligatures 'on' if not already 'on' (these features are 'on' by default).

Step 2. Replace characters manually at will. In most cases step 1 is quite sufficient. But if you want to add your personal touch, this is the step to go wild. Select the character you want to replace, then in the glyphs palette (fig. 1) select **<alternates for current selection>**. The glyphs palette will display all available alternate forms of the specific character. Double-click on any of these alternate glyphs to change into the new form. Do the same on all characters you want to change and voila! Your document is ready. You may even embellish your document with ornaments and frames. In our examples in fig. 3 we have marked in red all manually replaced characters. See also fig. 4 for Greek and finally fig. 5 for Cyrillic.

Alternate Step 2. Select the character you want to replace, then in the glyphs palette select a group from the drop down list (Fig. 1), find an alternate character you like and double-click to replace the original character.

***Photoshop users:** All new versions of Photoshop support only a few basic opentype features including contextual alternates. Unfortunately the glyphs palette is not included, so you cannot preview the opentype features i.e. change characters manually. You can work around this problem as follows: copy-paste the text into Illustrator, change the glyphs as described above and finally copy-paste your text back into Photoshop.

1. Contextual Alternates "Off"
2. Ligatures "Off"

1. Contextual Alternates "On"
2. Ligatures "On"

2. Ligatures "On"
3. Manual replacements

Regardless of whether the nations continue to remain isolated as far as the territorial aspect is concerned or they become more distributed, the electronic contiguity will reinforce the cultural link between them. During the few decades that television became widespread, some cultural codes were transmitted, even to nations where electronic means of communication were explicitly forbidden. The breakup of the Soviet Union may have been affected by this factor more than we would think possible. Television presented several products and services worldwide, making people consider them common, if not to respect them consistently. Moreover, television dramatically increased international communication. With 24-hours news

Regardless of whether the nations continue to remain isolated as far as the territorial aspect is concerned or they become more distributed, the electronic contiguity will reinforce the cultural link between them. During the few decades that television became widespread, some cultural codes were transmitted, even to nations where electronic means of communication were explicitly forbidden. The breakup of the Soviet Union may have been affected by this factor more than we would think possible. Television presented several products and services worldwide, making people consider them common, if not to respect them consistently. Moreover, television dramatically increased international

Regardless of whether the nations continue to remain isolated as far as the territorial aspect is concerned or they become more distributed, the electronic contiguity will reinforce the cultural link between them. During the few decades that television became widespread, some cultural codes were transmitted, even to nations where electronic means of communication were explicitly forbidden. The breakup of the Soviet Union may have been affected by this factor more than we would think possible. Television presented several products and services worldwide, making people consider them common, if not to respect them consistently. Moreover, television dramatically increased international

1. Contextual Alternates "Off"
2. Ligatures "Off"

Σχετίως αν τα έδνη παραμείνουν περιορισμένα από εδαφική άποψη ή γίνουν πιο διασκορπισμένα, η ηφεκρονική γειννίαση θα ενισχύσει τους πομπιστικούς δεσμούς ανάμεσά τους. Έως 75% δεκαετίες που η τηφέραση διασκορπίστηκε παντού, διέδωσε ορισμένους πομπιστικούς κανόνες, ακόμα και σε έδνη όπου τα ηφεκρονικά μέσα ενημέρωσης απαγορεύονταν κατηγορηματικά. Η κατάρρευση της πρώην Σοβιετικής Ένωσης μπορεί να επηρεάστηκε από αυτό τον παράγοντα περισσότερο απ' όσο νομίζουμε. Η τηφέραση παρουσίασε ορισμένα προϊόντα και υπηρεσίες σε όλο τον κόσμο, δίνοντας τη δυνατότητα στους ανθρώπους να τα δωρούν κοινά, αν όχι να τα σέβονται σταθερά. Επίσης, το μέσο αύξησε δραματικά την παγκόσμια επικοινωνία.

1. Contextual Alternates "On"
2. Ligatures "On"

Σχετίως αν τα έδνη παραμείνουν περιορισμένα από εδαφική άποψη ή γίνουν πιο διασκορπισμένα, η ηφεκρονική γειννίαση θα ενισχύσει τους πομπιστικούς δεσμούς ανάμεσά τους. Έως 75% δεκαετίες που η τηφέραση διασκορπίστηκε παντού, διέδωσε ορισμένους πομπιστικούς κανόνες, ακόμα και σε έδνη όπου τα ηφεκρονικά μέσα ενημέρωσης απαγορεύονταν κατηγορηματικά. Η κατάρρευση της πρώην Σοβιετικής Ένωσης μπορεί να επηρεάστηκε από αυτό τον παράγοντα περισσότερο απ' όσο νομίζουμε. Η τηφέραση παρουσίασε ορισμένα προϊόντα και υπηρεσίες σε όλο τον κόσμο, δίνοντας τη δυνατότητα στους ανθρώπους να τα δωρούν κοινά, αν όχι να τα σέβονται σταθερά. Επίσης, το μέσο αύξησε δραματικά την πα-

2. Ligatures "On"
3. Manual replacements

Σχετίως αν τα έδνη παραμείνουν περιορισμένα από εδαφική άποψη ή γίνουν πιο διασκορπισμένα, η ηφεκρονική γειννίαση θα ενισχύσει τους πομπιστικούς δεσμούς ανάμεσά τους. Έως 75% δεκαετίες που η τηφέραση διασκορπίστηκε παντού, διέδωσε ορισμένους πομπιστικούς κανόνες, ακόμα και σε έδνη όπου τα ηφεκρονικά μέσα ενημέρωσης απαγορεύονταν κατηγορηματικά. Η κατάρρευση της πρώην Σοβιετικής Ένωσης μπορεί να επηρεάστηκε από αυτό τον παράγοντα περισσότερο απ' όσο νομίζουμε. Η τηφέραση παρουσίασε ορισμένα προϊόντα και υπηρεσίες σε όλο τον κόσμο, δίνοντας τη δυνατότητα στους ανθρώπους να τα δωρούν κοινά, αν όχι να τα σέβονται σταθερά. Επίσης, το μέσο

1. Contextual Alternates "Off"
2. Ligatures "Off"

Сократ родился в Греции,
в городе Афинах. Отец
Сократа был рабочий, каме-
нотес, а мать повивальная
бабка. От этого-то Сократ
и говаривал часто, что мать
его была бабушка - помогала
людям рожаться, и он то же
делает, только помогает не
людям, а мыслям людским
рожаться. Отец Сократа
учил его своему мастерству,
посылал и в училище учиться
грамоте и другим наукам.
В Афинах все были гра-
мотные, и было много разных
училищ. Были самые бедные
училища, где дети учились
на дворе и буквы выводились
палочками на песке. Были
училища побогаче, где учились
грамоте, чтению, счету

1. Contextual Alternates "On"
2. Ligatures "On"

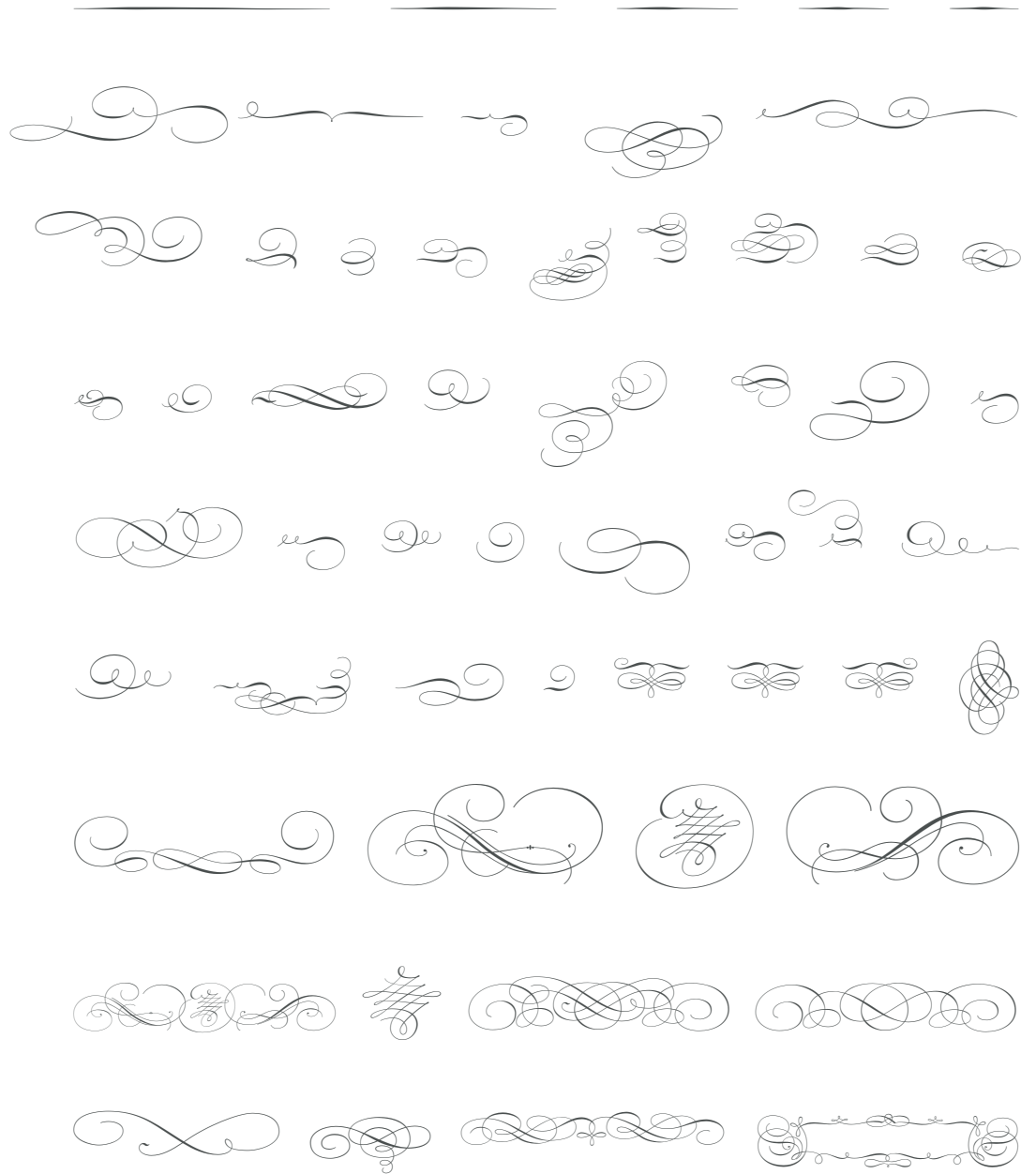
Сократ родился в Греции,
в городе Афинах. Отец Со-
крата был рабочий, каме-
нотес, а мать повивальная
бабка. От этого-то Со-
крат и говаривал часто,
что мать его была бабушка
- помогала людям рожаться,
и он то же делает, толь-
ко помогает не людям, а
мыслям людским рожаться.
Отец Сократа учил его
своему мастерству, посы-
лал и в училище учиться
грамоте и другим наукам.
В Афинах все были гра-
мотные, и было много раз-
ных училищ. Были самые
бедные училища, где дети
учились на дворе и буквы
выводились палочками на
песке. Были училища

2. Ligatures "On"
3. Manual replacements

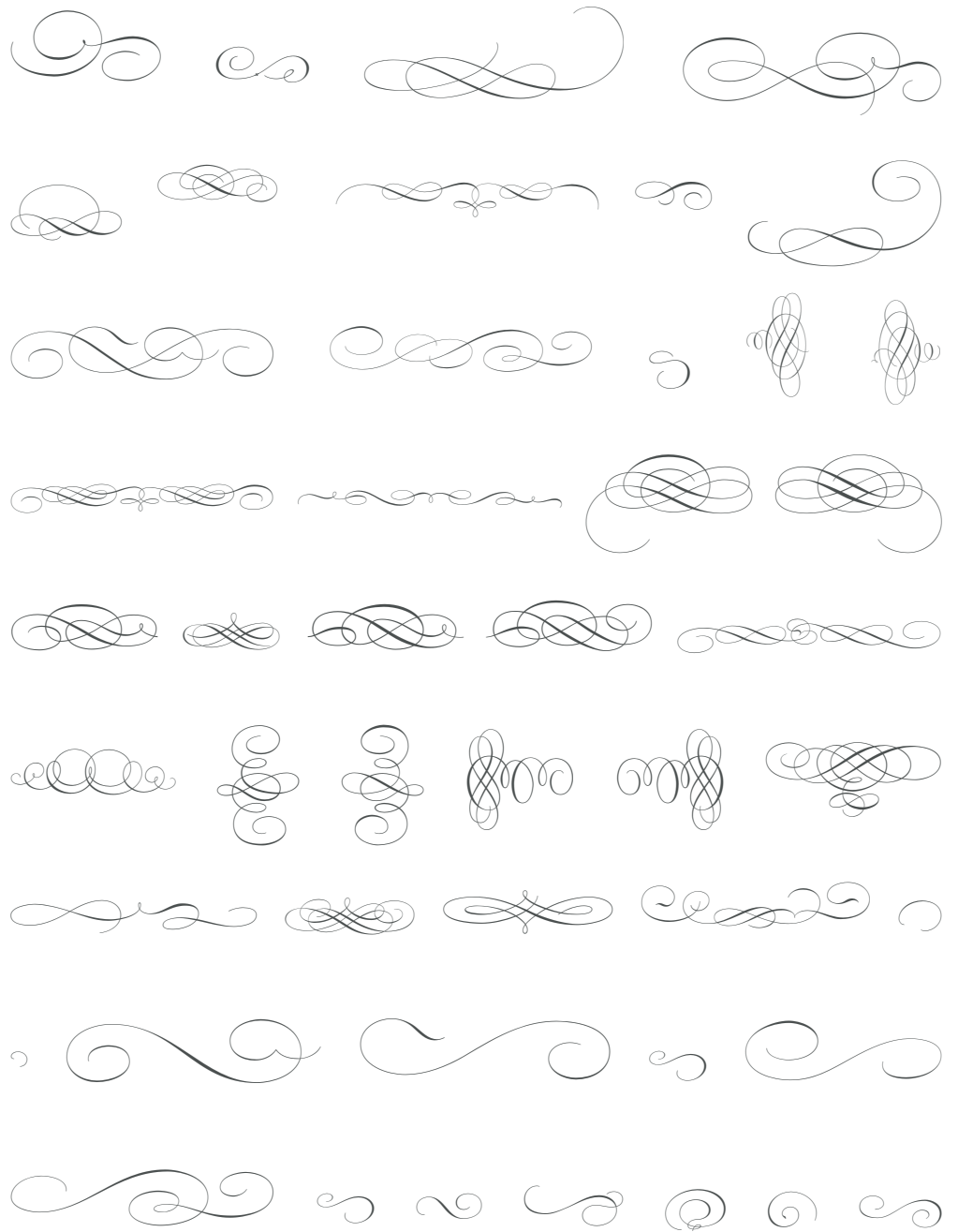
Сократ родился в Греции,
в городе Афинах. Отец Со-
крата был рабочий, каме-
нотес, а мать повивальная
бабка. От этого-то Со-
крат и говаривал часто,
что мать его была бабушка
- помогала людям рожаться,
и он то же делает, толь-
ко помогает не людям, а
мыслям людским рожаться.
Отец Сократа учил его
своему мастерству, посы-
лал и в училище учиться гра-
моте и другим наукам. В
Афинах все были грамот-
ные, и было много разных
училищ. Были самые
бедные училища, где дети
учились на дворе и буквы
выводились палочками на
песке. Были училища

ORNAMENTS & FRAMES

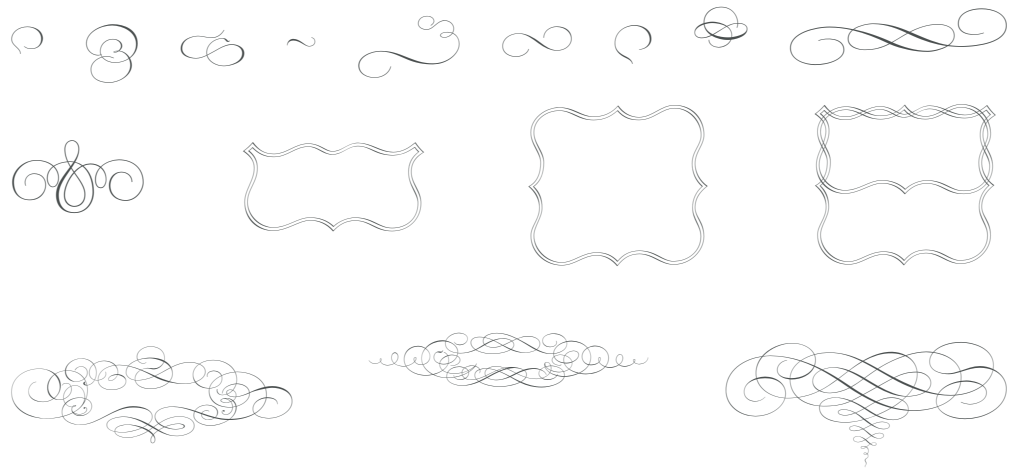
This is a list of the whole set of ornaments and frames included with PF Champion Script Pro. They have been placed here for your convenience so you can have a better understanding on how to use them more effectively.



ORNAMENTS & FRAMES



ORNAMENTS & FRAMES



Thank you!

THE FOUNDRY

Parachute® is an independent award-winning type foundry. It landed in 1999, but it wasn't till 2001 that it started operating as a full-scale company. Since then, 13 designers have joined in to form a select group of open minded, free spirited individuals, all coming from diverse design fields.

Over the years, Parachute has built a strong network of valuable relationships with customers in Europe, United States, Canada, Asia and Australia. The year 2003 marked the beginning of a new era for Parachute with the release of an award-winning catalog. Since then an emphasis was placed on multilingual support and opentype technology.

Parachute has won several major international typeface design awards, including the red dot: grand prix 2012 for original typeface. All Parachute fonts have been designed to offer multilingual support for major scripts such as Latin, Greek and Cyrillic. Latest entries support Arabic as well. For an updated profile please visit our website.

MAJOR CLIENTS

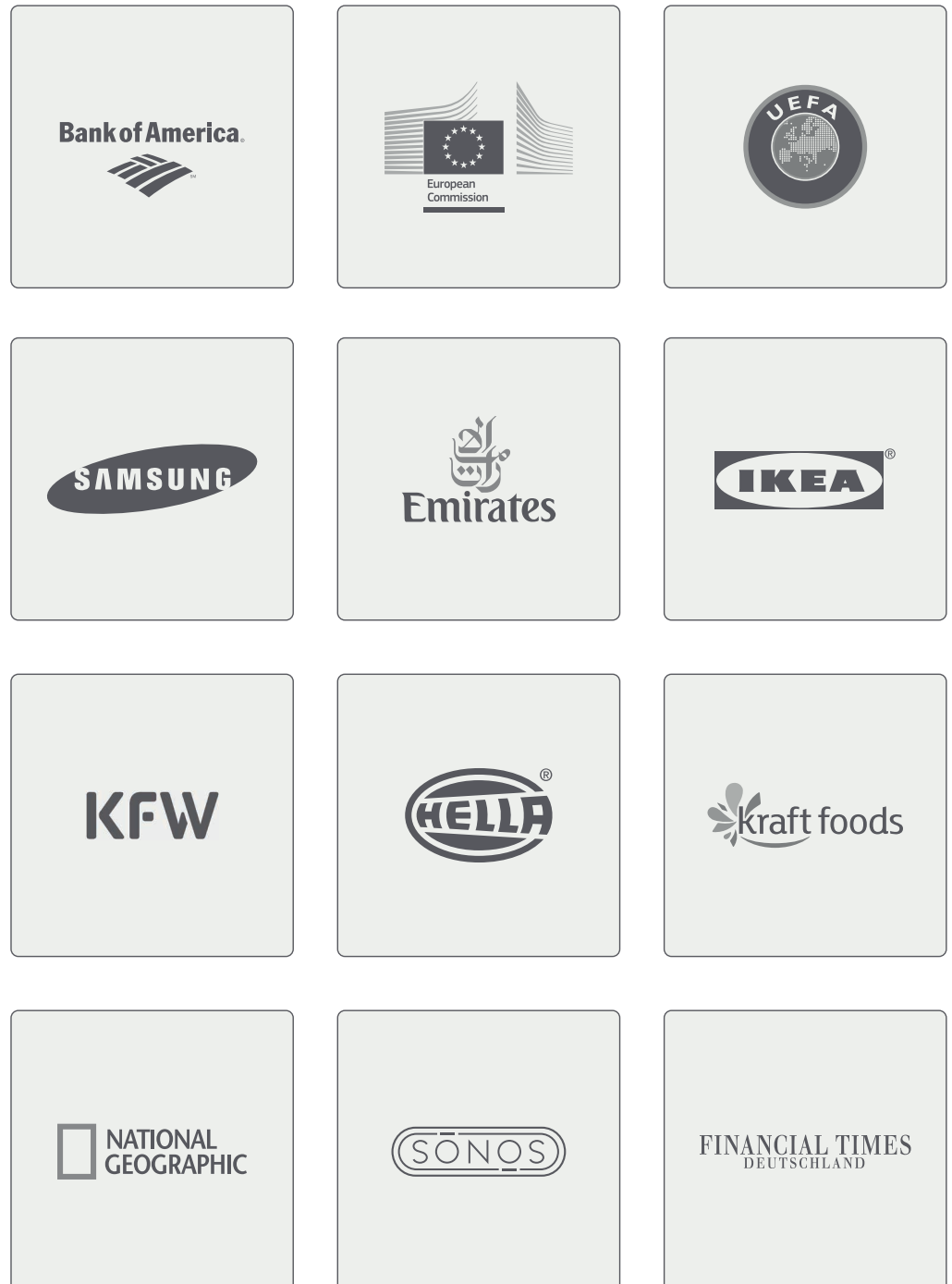
ABC Network	Financial Times	MIT	Stanford University
Adidas Group	Fox Network	MTV Networks	TBWA
American Express	Gap Inc	National Geographic	Texas Rangers
AOL Corp	Grey Group	NBA	The Brand Union
Bank of America	Harrods	Nestlé	Time Inc
BBC	Harper Collins	Nike	Tommy Hilfinger
CBC Radio & Television	Hasbro	Ogilvy & Mather	Turner Broadcasting
CBS Network	Ikea	Oprah Winfrey Network	Unilever
Coca Cola Company	Intel	Penguin Group	UCLA
Columbia University	Interbrand	Pentagram	UEFA
Converse	JWT	PepsiCo	Victoria's Secret
Cornell University	Leo Burnett	Princeton University	Virgin
Dentsu America	L'Oréal	Procter & Gamble	Vodafone
Deutsche Welle	Macmillan	Publicis	Warner Bros.
Disney	Marriott Hotels & Resorts	Qatar Museums Authority	
Dolby Laboratories	McCann Erickson	Random House	
Electronic Arts	McGill University	Russell Corporation	
ESPN	McGraw-Hill	Saatchi & Saatchi	
European Commission	MetaDesign	Samsung	

THE DESIGNER

Panos Vassiliou is a graduate of the University of Toronto with a major in Applied Science and Engineering. In his transition years from engineering to typography, he left his high-profile job, got involved with a theatre company, founded a design studio and pursued an academic career. A few years later he started a publishing company. He designs typefaces since 1993, including commercial fonts as well as commissions from international companies and organizations such as Bank of America, the European Commission, Samsung, Ikea, Financial Times, National Geographic. He is regularly invited as a guest speaker to conferences and seminars, to speak on typography and related topics. In 2008, he received a Gold Award from the European Design Awards, for the typeface families Centro Pro. The following year, he received three Awards for Excellence in Type Design from the International Type Design Competition 'Modern Cyrillic 2009' which was held in Moscow. In 2010 he received a Silver Award from the European Design Awards, for the typeface family Encore Sans Pro. The same year he received three awards from Granshan 2010 the 3rd International Eastern Type Design Competition. In 2011, his new series of typefaces Regal Pro was selected for the Creative Review Type Annual 2011. Subsequently Regal Pro won an award from the Communication Arts Annual Competition 2012, whilst Encore Sans Pro was nominated for the German Design Awards 2012. Most recently he received the prestigious **red dot: grand prix 2012** for Regal Pro, which was also a nominee for the German Design Awards 2014.

**BESPOKE FONTS FOR
LIVING BRANDS**

In an emerging global market, all major companies invest heavily on corporate branding and design as a means of differentiating themselves from competitors. A **custom corporate typeface** is equally important as it greatly influences the unconscious perception of the anticipated target audience. It reflects the essence of the brand, creates a consistent visual identity which strengthens the product and projects an attractive and easily perceived personality. At Parachute we offer original custom design, multilingual support and advanced typographic expertise. For over a decade, we have provided custom corporate font services to some of the most innovative designers and companies around the world. Our clientele includes advertising and branding agencies, broadcasting corporations, publishing houses, financial institutions and multinational corporations such as:



RECENT AWARDS

European Design Awards 2014 | Bronze

Bague Pro

German Design Awards 2014 | Nominee

Regal Pro

HiiiBrand Awards 2013 | Silver

Regal Pro

HiiiBrand Awards 2013 | Nominee

Encore Sans Pro

Red dot Design Awards 2012 | Grand Prix Winner

Regal Pro

Communication Arts Annual Competition 2012 | Winner

Regal Pro

German Design Awards 2012 | Nominee

Encore Sans Pro

Creative Review Type Annual 2011 | Winner

Regal Pro

European Design Awards 2011 | Finalist

Regal Pro

EBGE Awards 2011 | Finalist

Regal Pro

Granshan Awards 2010 | Excellence Award

Regal Pro

Granshan Awards 2010 | 2nd Prize

Champion Script Pro

Granshan Awards 2010 | Excellence Award

Adamant Pro

Granshan Awards 2010 | Excellence Award

Encore Sans Pro

European Design Awards 2010 | Silver Winner

Encore Sans Pro

International Type Design Competition 2009 | Excellence Award

Centro Pro

International Type Design Competition 2009 | Excellence Award

Champion Script Pro

International Type Design Competition 2009 | Excellence Award

Goudy Initials Pro and Goudy Ornaments

European Design Awards 2008 | Gold Winner

Centro Pro

EBGE Awards 2004 | Merit AwardArchive Pro



Parachute®

24 Acharnon Street, Kifissia 14561 GR | T: +30 210 80 18 100 F: +30 210 80 16 066
sales@parachute.gr | www.parachute.gr

You may reproduce this manual and distribute it freely, provided you do not edit the document and/or remove the copyright information. Parachute assumes no responsibility or liability for any errors or inaccuracies that may appear in this document. Contents are subject to change without notice.

©2014 Parachute® All rights reserved.

Parachute® and Champion Script® are registered trademarks.